

Foil and Glass Covers

Glass Cover

DIC compatible

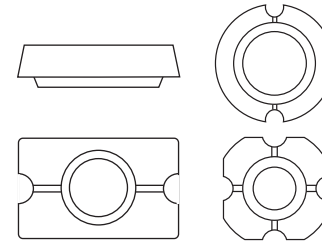
FoilCovers (gas-permeable)

not DIC compatible

Cell Cultivation Vessels



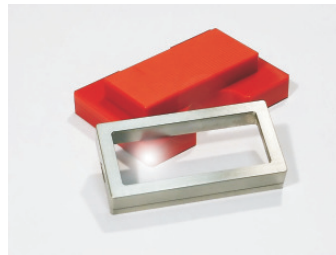
Petri dish & POC



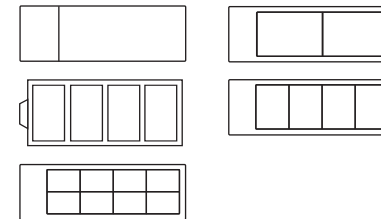
Petri dishes

Ø 35 mm and 60 mm

POC Cell Cultivation System
for open, closed culture
and perfusion experiments

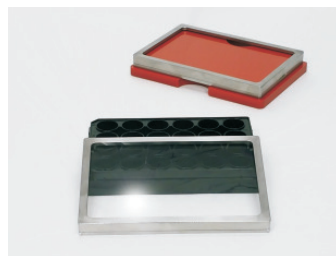


Lab-Tek + Lab-Tek II

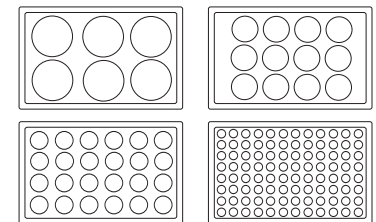


Slides

- Lab-Tek™ (Nunc)
- Chamber Slides (Falcon)
- IBIDI-Chambers



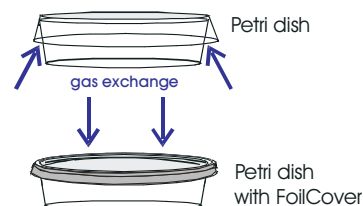
Multiwell plate



Multiwell plates
with 6 to 96 wells:
max. 86 x 128 mm
(Falcon + Corning)

Comparison of the rate of evaporation: CO₂-incubator versus microscope incubator

Evaporation of water out of 60 mm Petri dishes (5 ml Hank's buffer) in the incubation system of an inverted microscope compared to Petri dishes in a conventional CO₂-incubator.



	normal cover	FoilCover
microscope incubator without CO ₂ -Cover + humidity	40 μl/h	4 μl/h
CO ₂ -incubator (incubation cupboard)	3 μl/h	