

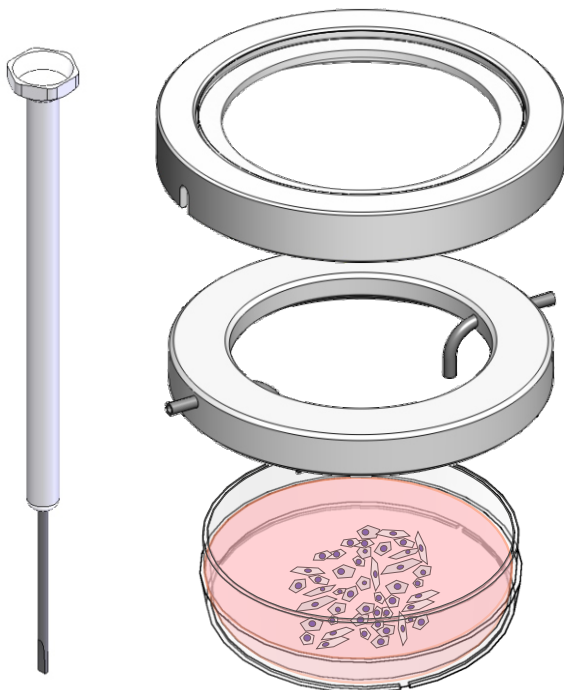
Perfusion-Set for "35" Petri dishes

500-800 173

Perfusion-Set for 35 mm Petri dishes

consisting of:

cover with glass insert, # 000 878; perfusion ring, # 501 514;
canal tube inlet, # 501 584; canal tube outlet, # 501 585;
grub screws # 900 093; screwdriver # 900 405



cover with glass insert

perfusion ring

Petri dishes "35"

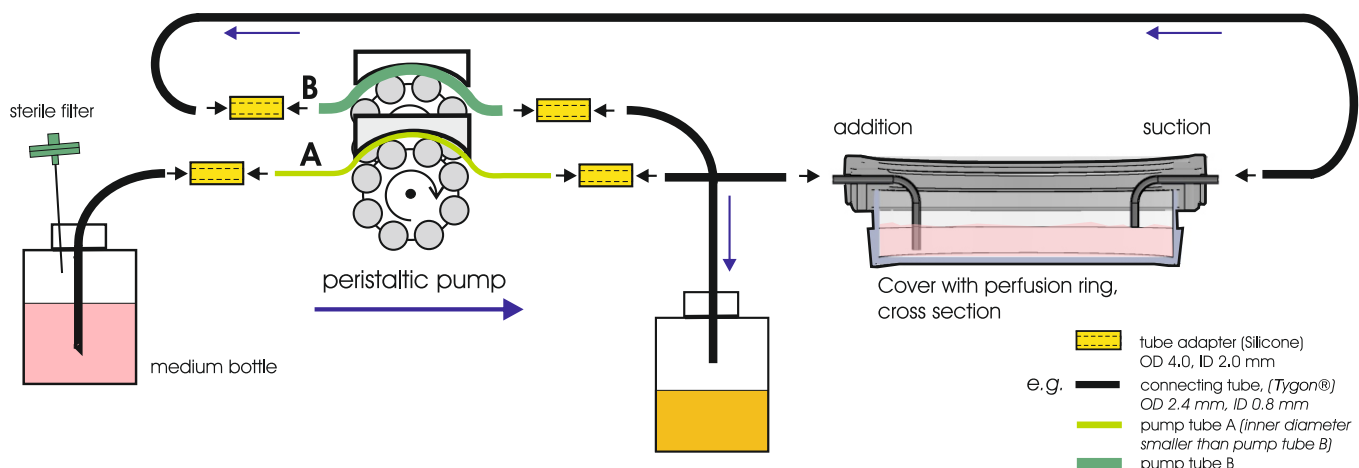
- stainless steel V4A
- sterilizable
- glass insert
- cut-outs for the canal tubes

- stainless steel
- sterilizable
- lateral openings for the canal tubes
- Screws for the fixation of the canal tubes

- different manufacturer with outer diameter 31.7 - 37.6 mm

Scheme of an "open perfusion"

assembly and procedure of the perfusion



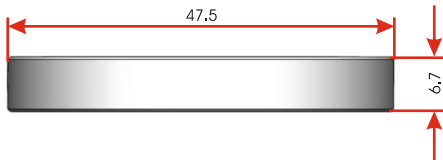
This Perfusion-Set is compatible to a large variety "35" Petri dishes.

Please do not hesitate to contact us regarding a cover with perfusion adapter for other Petri dishes!

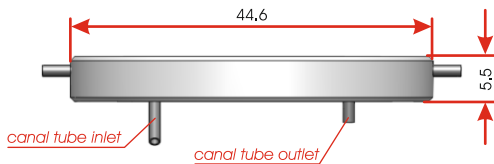
Perfusion-Set for "35" Petri dishes

500-800 173

cover with glass insert

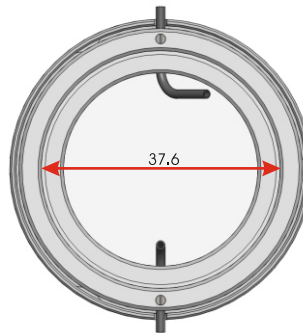


perfusion ring with canal tubes



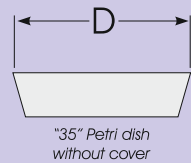
Specifications

perfusion ring with cover - bottom view



dimensions in mm

- For "35" Petri dishes with an outer diameter:
Dmax = 37.6 mm
Dmin = 31.7 mm



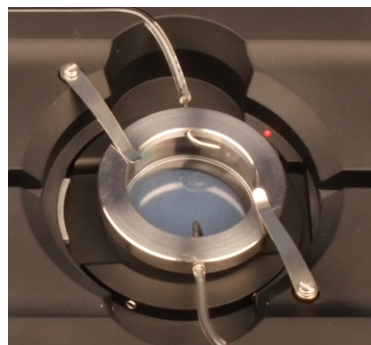
Assembly

- Set the sterilized perfusion ring onto the Petri dish "35"
- Set the cover with glass insert onto the perfusion ring
- Plug the Tygon[®] tubes onto the canal tubes



Application example

- Petri dish "35" with perfusion ring and cover inserted into the Heating Insert P 2000



This Perfusion-Set is compatible to a large variety "35" Petri dishes.

Please do not hesitate to contact us regarding a cover with perfusion adapter for other Petri dishes!