

Dual-Perfusion-Set for "35" Petri dishes

500-800 516

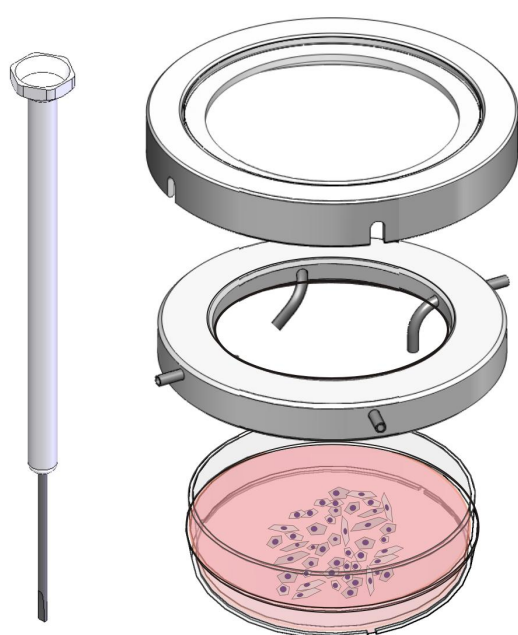
Dual-Perfusion-Set for 35 mm Petri dishes

consisting of:

cover with glass insert, # 001 197; perfusion ring, # 001 198

2 canal tube inlets, # 501 584; 2 canal tube outlets, # 501 585;

grub screws # 900 820; screwdriver # 900 405



cover with glass insert

perfusion ring

Petri dishes "35"

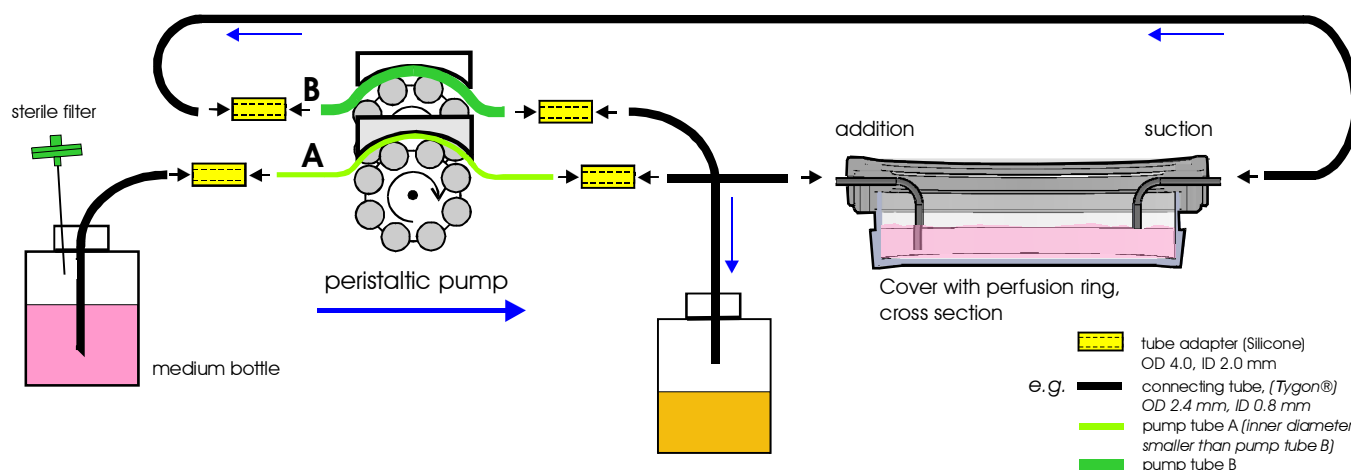
- stainless steel
- sterilizable
- glass insert
- cut-outs for the canal tubes

- stainless steel
- sterilizable
- lateral openings for the canal tubes
- Screws for the fixation of the canal tubes

- different manufacturer with outer diameter 31.7 - 37.6 mm

Scheme of an "open perfusion"

assembly and procedure of the perfusion



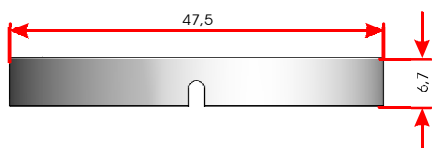
This Perfusion-Set is compatible to a large variety "35" Petri dishes.

Please do not hesitate to contact us regarding a cover with perfusion adapter for other Petri dishes!

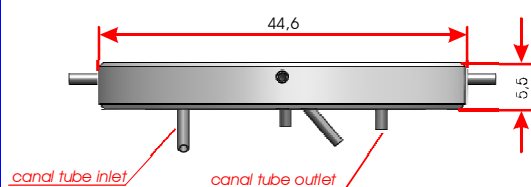
Dual-Perfusion-Set for "35" Petri dishes

500-800 516

cover with glass insert

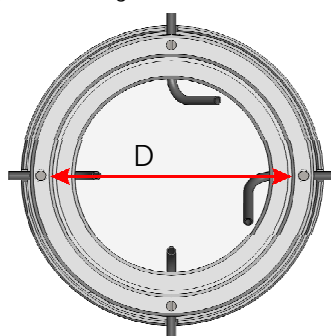


perfusion ring with canal tubes



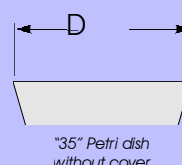
Specifications

perfusion ring with cover - bottom view



dimensions in mm

- For "35" Petri dishes with an outer diameter of 32.8 mm up to 34.5 mm



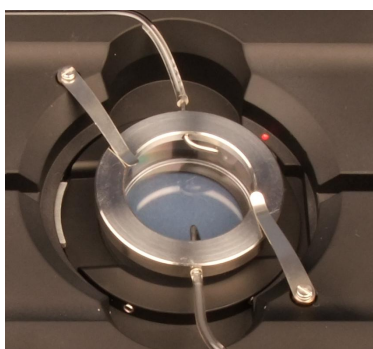
"35" Petri dish without cover

Assembly



- Set the sterilized perfusion ring onto the Petri dish "35"
- Set the cover with glass insert onto the perfusion ring
- Plug the Tygon[®] tubes onto the canal tubes

Application example



- Petri dish "35" with perfusion ring and cover inserted into the Heating Insert P 2000

This Perfusion-Set is compatible to a large variety "35" Petri dishes.

Please do not hesitate to contact us regarding a cover with perfusion adapter for other Petri dishes!