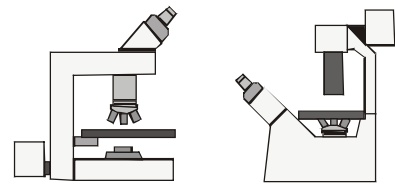




Manual

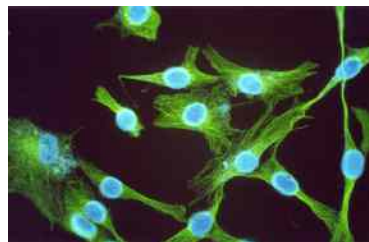


ROC

Cell and Tissue Cultivation System for Microscopy



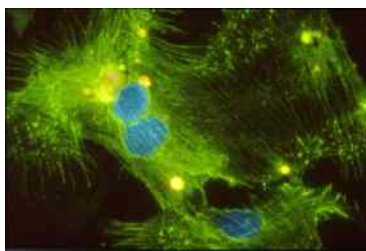
Closed Cultivation



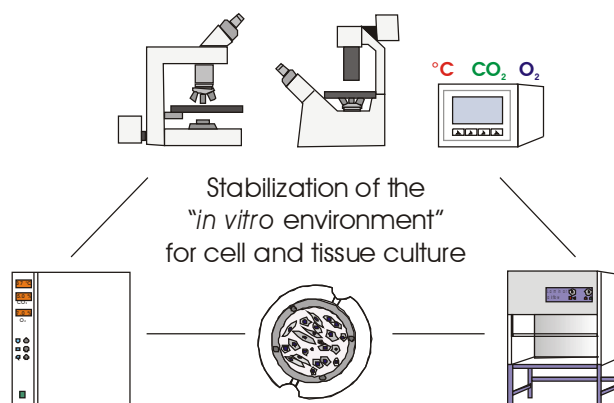
Open Cultivation



Open Cultivation



Open Perfusion



This instruction manual is an integral part of this product. It contains important information on installing and using the product. Please keep this in mind, especially when passing this product on to third parties. For this reason, keep the operating instructions for future reference! Design and specifications are subject to change without notice. The manual is not covered by an update service.

Unless expressly authorized, forwarding and duplication of this document, and the utilization and communication of its contents are not permitted. Violations will entail an obligation to pay compensation.

All rights reserved in the event of granting of patents or registration of a utility model.

All product names mentioned herein may be the trademarks or registered trademarks of their respective companies and "™" and "®" are not mentioned in each case in this manual.

© 2009

Diese Bedienungsanleitung gehört zu diesem Produkt. Sie enthält wichtige Hinweise zur Inbetriebnahme und zur Handhabung. Machen Sie sich daher bitte mit dem Inhalt vertraut und beachten Sie besonders die Hinweise, die der sicheren Bedienung des Gerätes dienen. Achten Sie hierauf, auch wenn Sie dieses Produkt an Dritte weitergeben. Heben Sie deshalb diese Bedienungsanleitung zum Nachlesen auf!

Änderungen, die dem technischen Fortschritt dienen, bleiben vorbehalten. Das Manual unterliegt keinem "Update-Service".

Solange keine ausdrückliche Genehmigung vorliegt, ist die Weitergabe und Vervielfältigung dieses Dokuments und die Benutzung und Verbreitung seiner Inhalte nicht gestattet. Verstöße verpflichten zur Zahlung von Entschädigung.

Alle Rechte vorbehalten, die im Falle der Gewährung von Patenten und Gebrauchsmustern entstehen.

Alle in diesem Handbuch erwähnten Produktnamen können Warenzeichen oder eingetragene Warenzeichen der jeweiligen Eigentümer sein und sind nicht überall ausdrücklich durch "™" und "®" gekennzeichnet.

© 2009

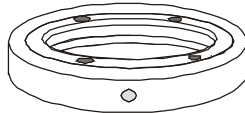
LaCon
e-mail: FaLaCon@t-online.de
www.pecon.biz

ROC-Chamber-System (Round - Open - Closed)

A system for —

all microscopic techniques
cultivation of cells and tissue
still and motion photography
"Open" perfusion and "Open" and "Closed" cultivation
base plate, dimension: Ø 50 mm, height 6 mm

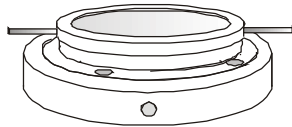
Closed Cultivation



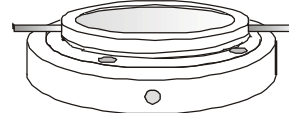
Open Cultivation



Open Perfusion



Open Perfusion (flat version)

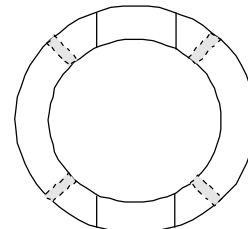


*cultivation area: 8.03 cm²
volume: 0.66 - 1.32 ml*

*cultivation area: open version 6.6 cm²
volume: up to 2.5 ml*

- * In the case of closed version, no disturbing meniscus is available at the liquid surface. It is suitable for use of high-resolution objectives, still and motion photography e.g..
- * The open version allows a rapid change of medium, subcultivation of cells, test of substances, preparation for electron microscopy, histochemical methods, Ca⁺⁺ measurements, micromanipulation e.g..
- * The "Open" perfusion offers continuous supply of the required substances to the cells and a removal of cell products, toxins e.g.. It allows a rapid entrance to the cultivation surface and therefore a rapid or a slow medium exchange.
- * The cells can also be cultivated on glass (cover glass, Ø 42x 0.17 mm) or in the case of "Open" cultivation on a crystal-clear FEP-foil (CultFoil, Ø 42 x 0.025 mm), too.
- * The base plate and the screw ring are made of stainless steel. Other materials which come in contact with the cells are non-toxic (glass, silicone, Teflon[®]).
- * The whole chamber or parts of the chamber can be sterilized by dry heat at 165 - 170 °C for 2 hrs or autoclaved at 121 °C.
- * Cells can be precultivated on glass cover slips (42 mm in 50 - 60 mm Petri dishes) and then transferred into the ROC-Chamber under sterile conditions (Laminar Air Flow).
- * The ROC-Chamber can be tempered, without an additional adapter in the Heating Mounting Frame MH, KH and AH

Accessories: A **specific adapter**, # 0728.002 can be employed for a sufficient fixing of the ROC-Chamber in the Heating Insert P



Adapter for the ROC-Chamber
in the Heating Insert P

ROC System

External Dimensions: Base plate Ø 50 x 6 mm



Closed Cultivation

observation area: 8.03 cm², 29 mm
weight (approx): 57 g



Open Cultivation

observation area: 6.6 cm², 29 mm
weight (approx): 62 g



Open Perfusion

observation area: 6.6 cm², 29 mm
weight (approx): 93 g

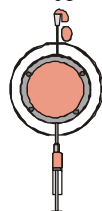


Open Perfusion (flat Version)

observation area: 6.6 cm², 29 mm
weight (approx): 91 g

changing of medium

so or

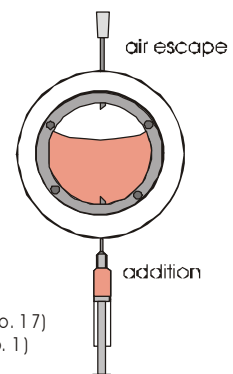


remove the medium and introduce fresh medium **very slowly** (the better method)

Recommendation needles using 1 mm silicone : addition with 25 G (No. 18), exit 24 G (No. 17)
using 2 mm silicone : addition with 23 G (No. 14), exit 20 G (No. 1)

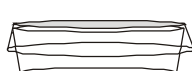
introduce fresh medium **very slowly**, displacing the "old" medium

addition of nutrition medium + cells



A precultivation of cells on cover slips in Petri dishes ("60er") is possible!

sterile cover slip



cover slip with cells



In this case the different components of the POC-R2 Chamber have to be sterilized beforehand unconditionally.

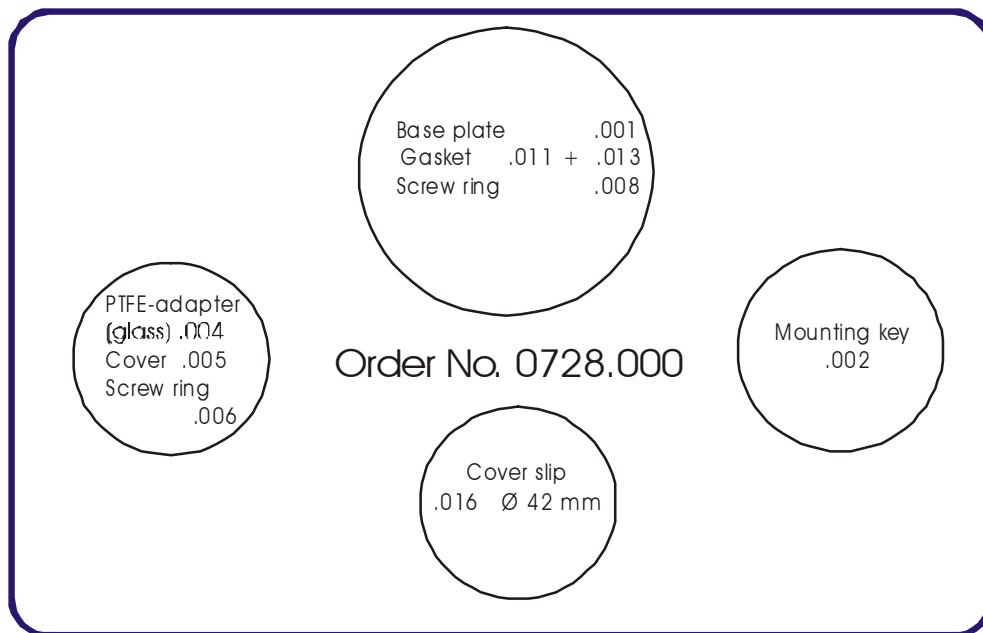
ROC

Cell and Tissue Cultivation System (Perfusion, Open, Closed)

Pieces	Articles	Order Number
	ROC Set in a case	0728.000
	<i>Parts of the ROC Set:</i>	
1	Chamber, base plate 50 Ø x 6 mm	0728.001
1	Mounting key	0727.002
1	PTFE adapter for glass	0727.004
1	Cover for PTFE adapter	0727.005
1	Screw ring for the PTFE adapter and a closed culture system	0727.006
2	Gasket, silicone 42 x 0.5 mm	0727.011
2	see above 42 x 2.0 mm	0727.013
100	Cover slip 42 x 0.17 mm	0727.016

Pieces	Accessories (not included in the set)	Order Number
1	PTFE adapter for foil	0727.003
20	FEP foil, (CultFoil) 42 x 0.025 mm	0727.017
1	Tube-Set consisting of: New!	0727.034
	<i>Tygon</i> ® tube i.d. 0.8 x o.d. 2.4 mm, 1 m	
	4 x tube adapters (silicone) i.d. 2.0 x o.d. 4.0 mm, à 0.15 m	
1	Perfusion adapter for the PTFE adapter (0727.003 + .004) with cover, <i>open</i> cultivation	0727.119
1	Perfusion adapter, flat, screw-in with a PTFE adapter, cover and 4 tube adapters (silicone), <i>open</i> cultivation	0727.121
1	FoilCover for POC-R2 chamber (<i>open</i> cultivation) consisting of a tension ring, a base ring and a red mounting plate	0727.025
20	CultFoil (25µm) for FoilCover	0727.026
1	Adapter* for ROC-chamber	0728.002
	* = a special adapter is necessary using the heating frame for the ROC-Set	

ROC Set in a case

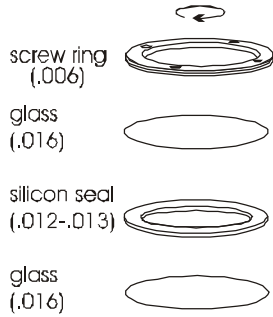


ROC-Chamber-System

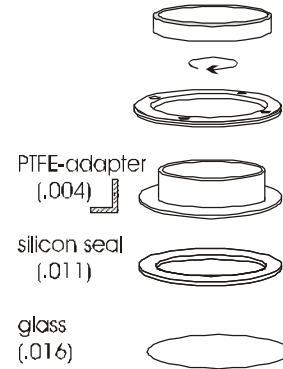
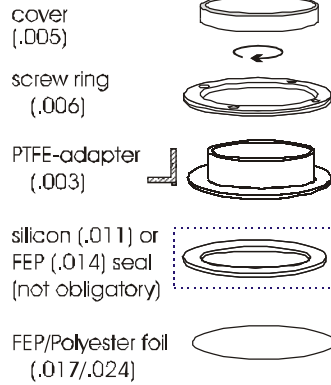
(Cat. No. 0728.xxx)

(Cat. No. 0727.xxx)

(Cat. No. 0727.xxx)



Closed Cultivation



"Open" Pe

cover (.020)

perfusion ring (.019)

PTFE-adapter (.003 or .004)

silicon seal (.011)

glass (.016) or foils (.017/.024)

Open Cultiva

ROC-Chamber base plate (0728.001)

